



IVAN ANDRAŠEK – dental technician

Born in Novi Marof in 1961. In 1980 he finished his dental technician education. In 1983 he moved to Zagreb, where in 1989 he opened a private dental laboratory practice. To improve the quality of his future work, concentrating on fixed prosthetics and aesthetics, he attended more than 30 work courses all over Europe. Considering the fact that he has gone through all stages of dental technique, constantly keeping up with the latest technologies, in 2008 he introduced the CAD/CAM system into the dental laboratory. In 2012 he expanded his activities and established ANDI – DENT d.o.o.



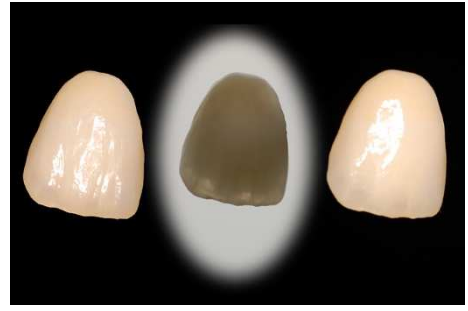
ANDI – DENT d.o.o.

Unifies the dental office and dental laboratory, which remains the primary activity, and cooperates with many other dental offices. It is based on an individual approach, maximally accepting the wishes of every patient. Four dental technicians are employed in the dental laboratory, but there are plans of expanding and employing two more, while the total number of dental technicians is planned to be no more than ten, for the purpose of maintaining and improving the quality. The dental office functions on an external cooperation contract principle and we currently have a contract with four dental medicine doctors; two prosthetics specialists, one surgeon and one multivalent dentist. ANDI – DENT is equipped with state of the art technology, it is completely digitalized and owns two CAD/CAM systems. Full ceramic or zirconia base is used in over 80% of the works, while the metal bases are made with the latest printing technique. The ANDI – DENT team almost completely abandoned the classic way of working and is oriented towards advanced digital technology which allows more precise and better quality work.



BEFORE

AFTER



SAME TOOTH UNDER DIFFERENT LIGHT



BEFORE

AFTER

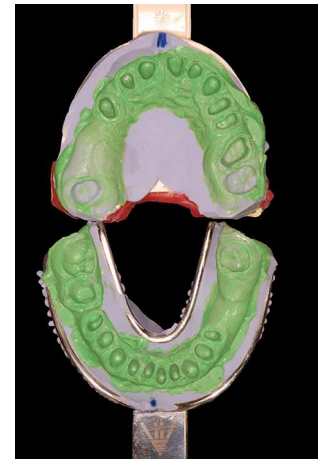
OVERVIEW OF A TOTAL RECONSTRUCTION OF UPPER AND LOWER JAW



Situation before the trimming



Trimmed teeth



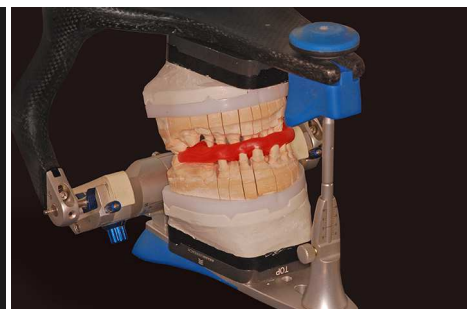
Impressions



Working models



Placing the upper jaw model into the fully adjustable articulator



Articulated models by the help of upper and lower jaw relation



3D scanner scanned models

Designing in CAD software

Synthesized zirconia



Applied ZR ceramics on zircon base

Ceramics baking correction

Finished work on model



Finished work in the mouth



BEFORE



Hermana **Bužana 6a**,
10 000 Zagreb
Tel. +385 1 4664181
Mob. +385 98 9659387
www.andi-dent.com



AFTER